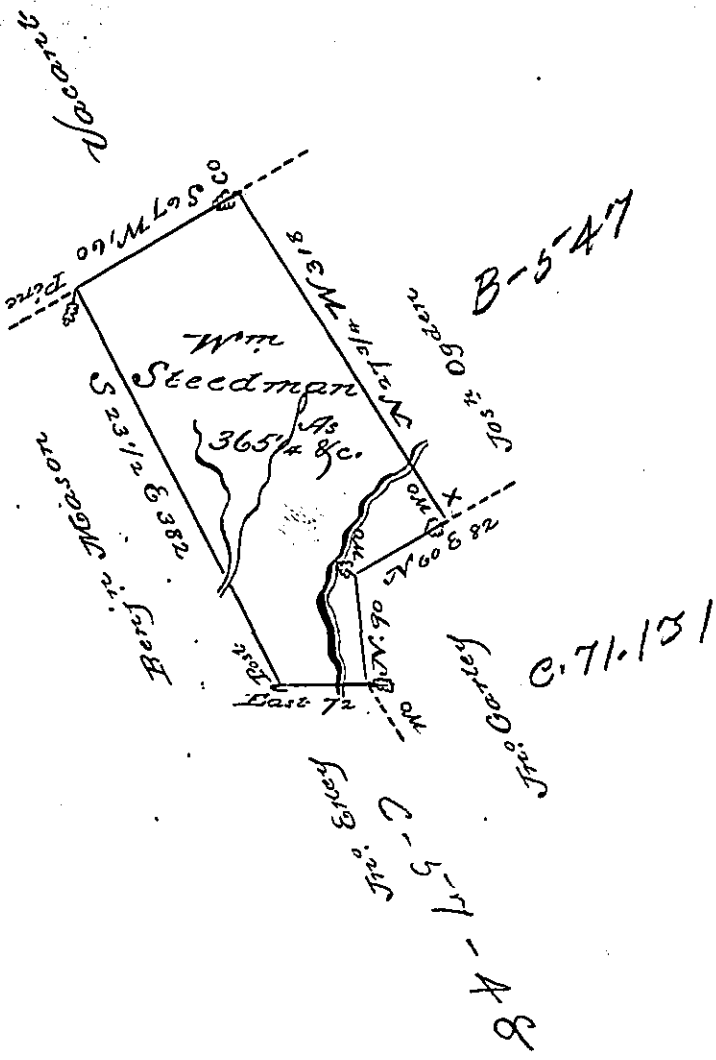


Butler & Denison -
Luzerne



(Ob.)raft of a tract of land called _____
 situate adjoining land Surveyed for Benjⁿ
 Mason and near the south end of a survey
 made for the German Reformed Congregation
 of Philadelphia in the County of Luzerne con-
 taining three hundred & sixty five acres 1/4 & all or more
 Surveyed for William Steedman the 27th day of
 March 1793 by virtue of a Warrant dated the
 1st day of April 17 (Ob.)

(Ob.)aniel Brodhead, Surv. Gen. (Part missing)

(Ob.) May

IN TESTIMONY that the above is a copy of the original remaining on file in
 the Department of Internal Affairs of Pennsylvania, made
 conformably to an Act of Assembly approved the 16th day of
 February, 1833, I have hereunto set my Hand and caused
 the Seal of said Department to be affixed at Harrisburg,
 this fifth day of July 1898.

James W. Latta
 Secretary of Internal Affairs.